

JOHN BRAY & SONS



36 Eversley Crescent
, St. Leonards-On-Sea, TN37 6QF
£1,300 Per Calendar Month



36 Eversley Crescent

, St. Leonards-On-Sea, TN37 6QF

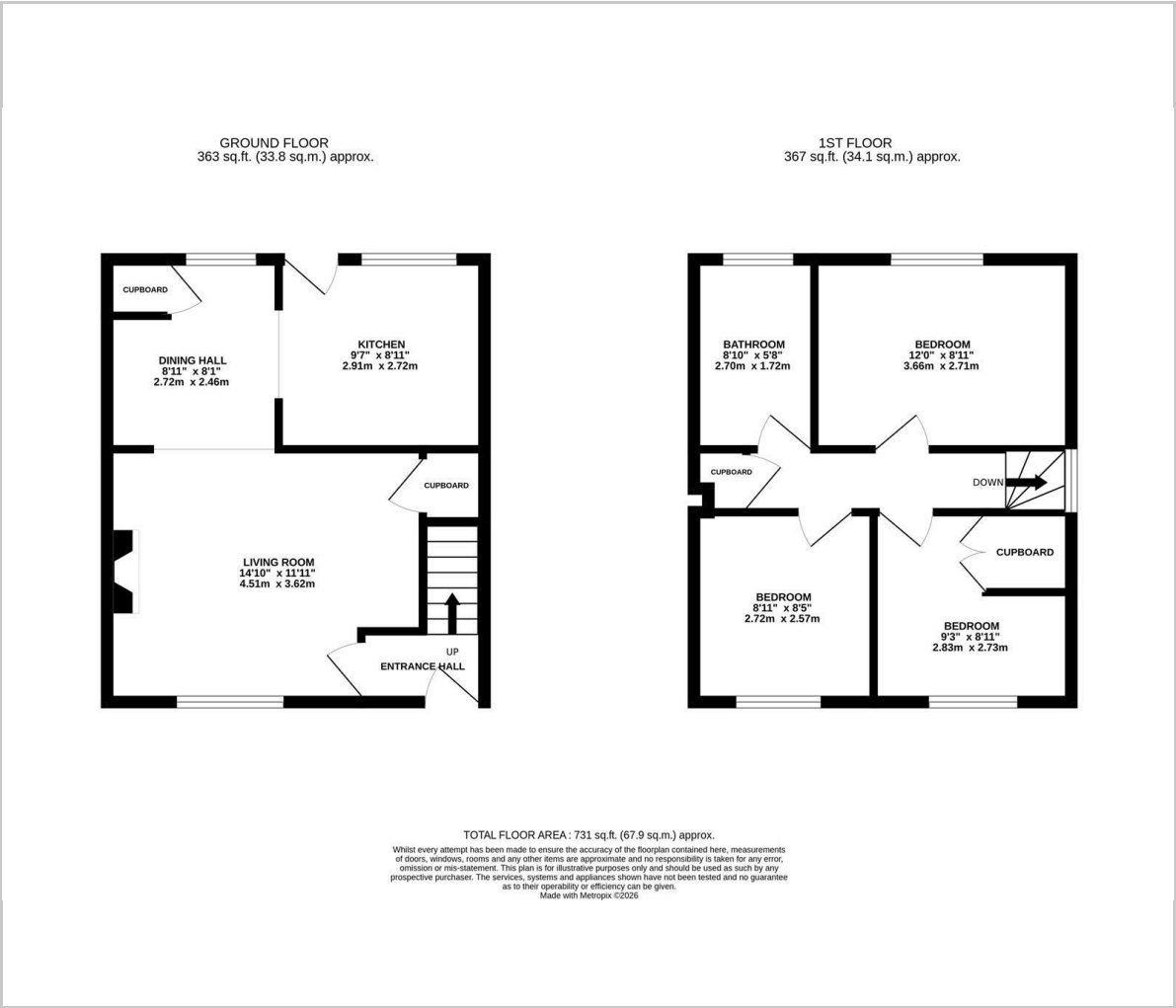
The property: a bright two storey end of terrace house. The accommodation here comprises of a spacious living room which measures an impressive 14'10 x 11'11 which leads through to a separate dining room. The modern fitted kitchen is adjacent, has ample storage and worktop space and enjoys access to the garden. The first floor houses three bedrooms, two of which are double, and a family bathroom with bath and shower over. Externally there is a large garden which benefits from an area of patio and expanse of lawn. Available immediately.

The location: situated in a convenient location within walking distance to Alexandra Park and local shops and transport links at Silverhill.





Floor Plan



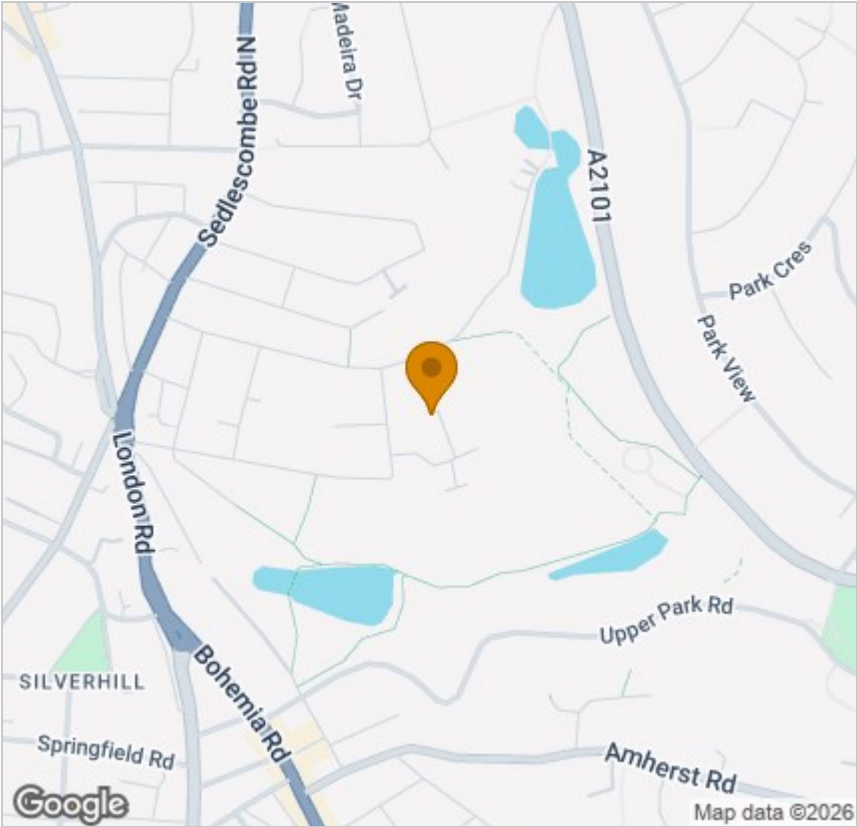
Viewing

Please contact our John Bray Hastings Lettings Office on 01424 421544 if you wish to arrange a viewing appointment for this property or require further information.

These particulars, whilst believed to be accurate are set out as a general outline only for guidance and do not constitute any part of an offer or contract. Intending purchasers should not rely on them as statements of representation of fact, but must satisfy themselves by inspection or otherwise as to their accuracy. No person in this firms employment has the authority to make or give any representation or warranty in respect of the property.

72 High Street, Hastings, East Sussex, TN34 3EL
Tel: 01424 421544 Email: enquiries@johnbrayandsons.com www.johnbrayandsons.com

Area Map



Energy Efficiency Graph

